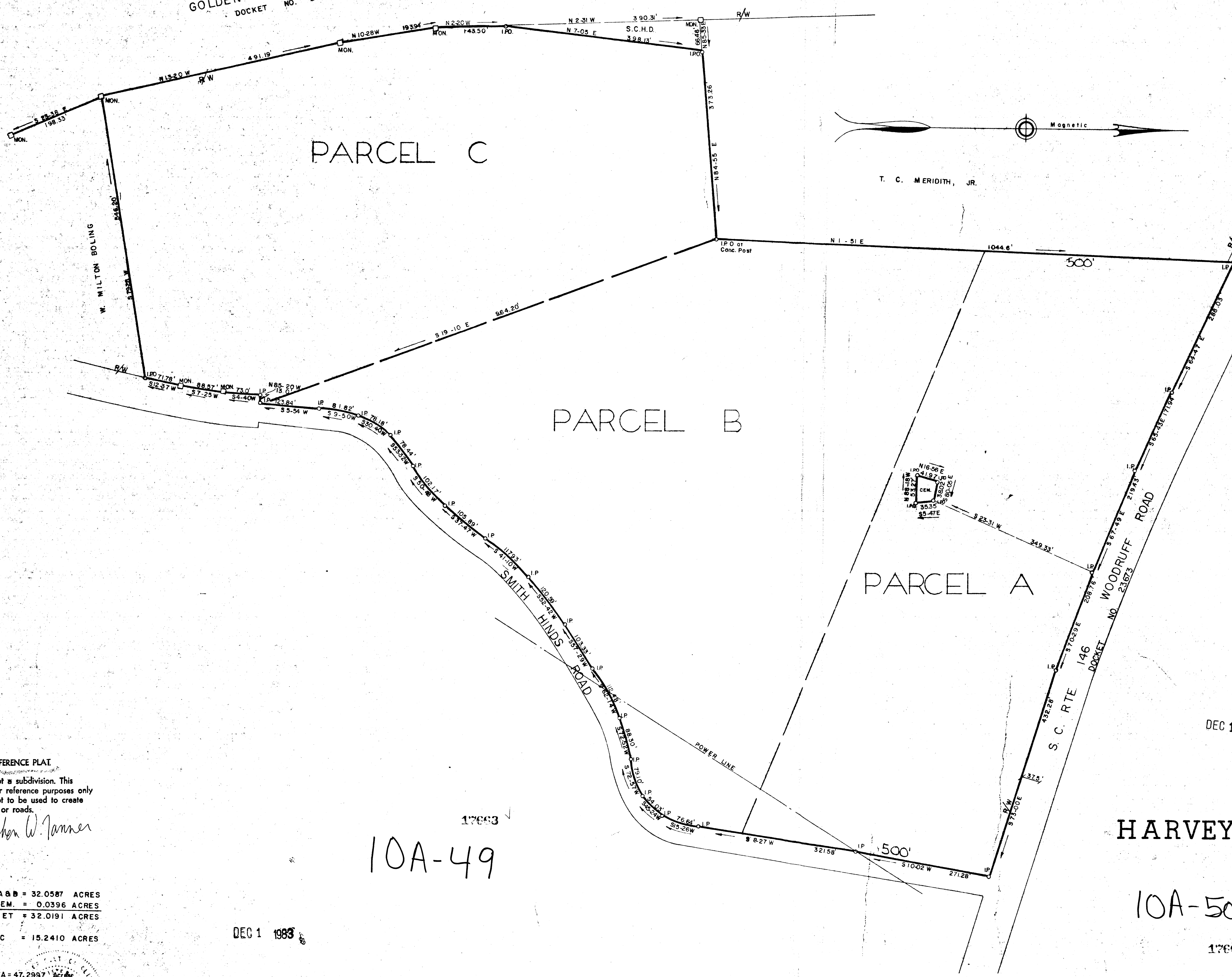


FILED
GREENVILLE CO. S. C.
DEC 1 3 44 PM '83
DONNIE S. TARKERSLEY
R.M.C.

FILED
GREENVILLE CO. S. C.
DEC 1 3 44 PM '83
DONNIE S. TARKERSLEY
R.M.C.

GOLDEN STRIP FREEWAY
DOCKET NO. 23.673



PARCEL C

PARCEL B

PARCEL A

T. C. MERIDITH, JR.

REFERENCE PLAT
This is not a subdivision. This plat is for reference purposes only and is not to be used to create new lots or roads.
Stephen W. Tanner

PARCEL A & B = 32.0587 ACRES
CEM. = 0.0396 ACRES
NET = 32.0191 ACRES
PARCEL C = 15.2410 ACRES

TOTAL AREA = 47.2997 Acres
CEM. = 0.0396 Acres
NET AREA = 47.2601 Acres
BLOCK BOOK 5475
F.B. 475
S.C. Reg. No. 916

17663
10A-49

DEC 1 1983

DEC 1 1983

PROPERTY OF
HARVEY HUBBELL, INCORPORATED
GREENVILLE COUNTY, S. C.

10A-50

Scale 1" = 100' July, 1983

DALTON & NEVES CO., ENGINEERS

121 MANLY STREET
GREENVILLE, S. C.

17663